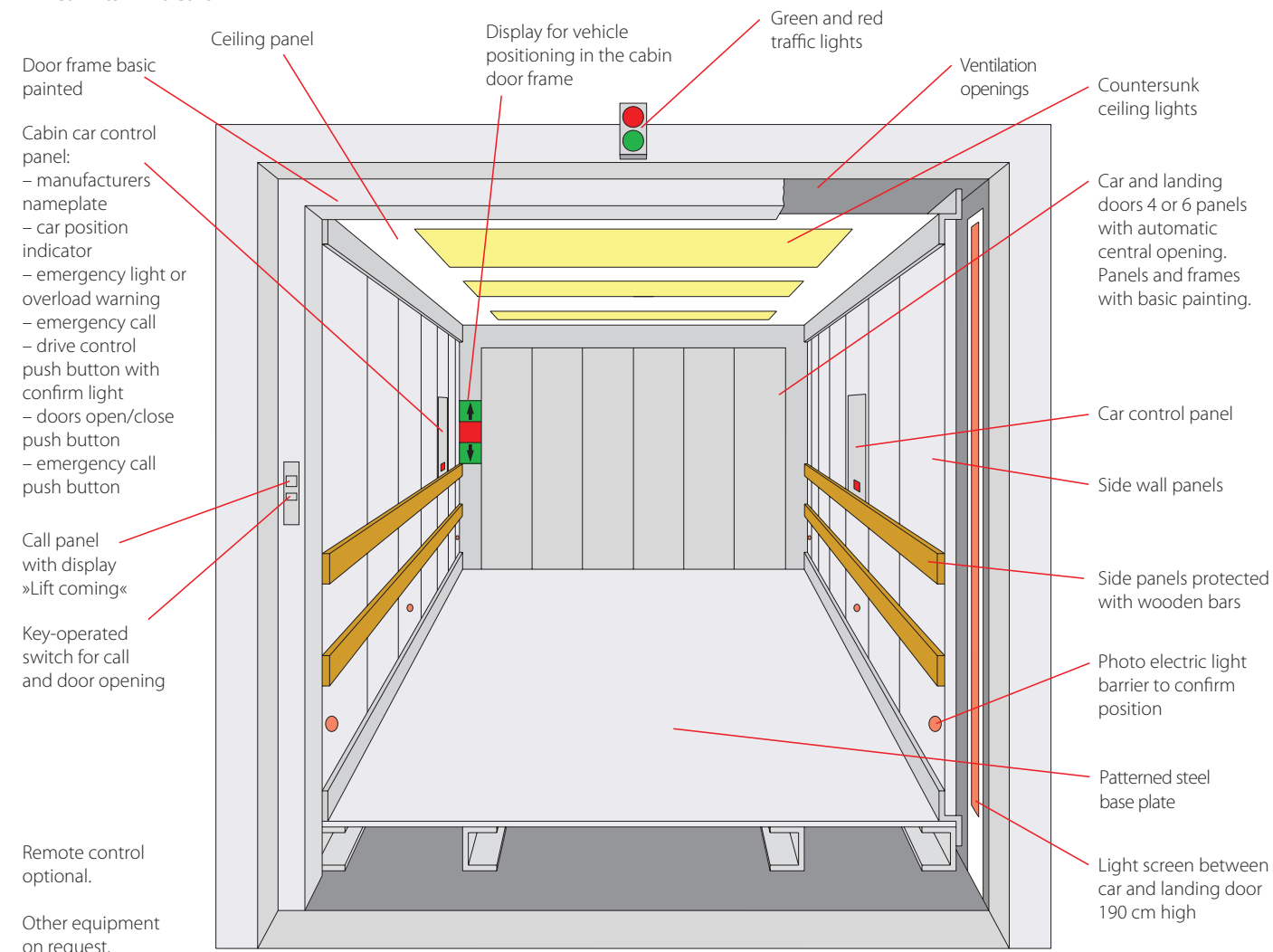


## Carlifts • Lift Cars



## Lift car

The sturdily constructed lift car consists of an outer fabricated frame supporting the cabin which is insulated against noise and vibration.

The four or six panel doors open and close automatically. Other lift car equipment is shown above.

## Shaft Equipment

All fastenings from cylinders, guide rails and landing doors are adjustable screwed.

## Machine Room

A separate machine room shaft on the level of the contains the hydraulic pump unit and electric control panel (in the control cabinet). The radiated heat must be removed by ventilation and aeration units to be fitted by the customer. We recommend that the machine room is located adjacent to the lowest floor and not on a facing side.

Minimum clearance dimensions:  
 Height 200 cm, width 180 cm, Length 240 cm, door opening 90 cm.  
 Other configurations and dimensions on request.

## Hydraulic Power Pack

Is a low noise sub-oil model with a 380/400 V submersible oil motor, a low pulsation screw pump and a pulsation silencer. If the motor coil temperature reaches 100° C or the oil temperature rises to 70° C, the system is stopped. The temperature in the machine room should be between 15° and 35° C.

Oil heaters and oil coolers can be installed if necessary. The electro-hydraulic control guarantees smooth travelling in the lift in all situations. Pressure switches emit signals to shutdown the system if the permissible maximum load is reached or the pressure falls below the minimum limit.

## Electronic Lift Control

Electronic microprocessor down collective control. In addition to the standard lift equipment, the following functions are integrated:  
 – fault memory  
 – diagnosis interface

– motor PTC thermistor protection  
 – inspection drive  
 – correction drive  
 – signal device  
 – remote control  
 – oil cooler control  
 – cabin ventilator

## Door control

VWF pulse control with adjustable door opening times.

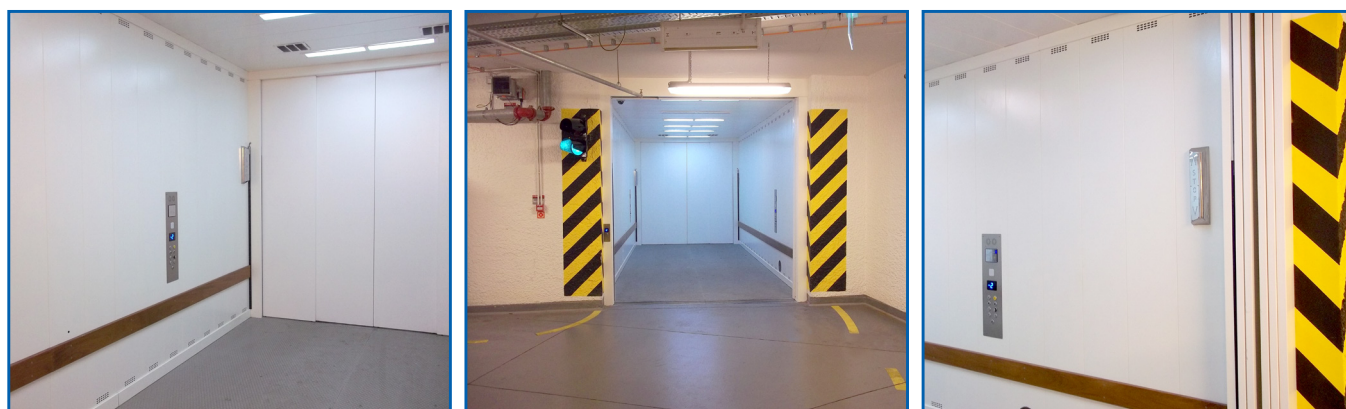
## Service Call Center (0800 88 1234)

Free Service Call Center available 24 hours a day for maintenance and in the event of emergency call out.

## Notes

We reserve the right to make design changes. We reserve the right to change construction details on the basis of technological progress and in the light of environment regulations.

## Lift car variants



# Data Sheet Carlift

(in accordance with EN 81 - 20/50)



## ELMAS S.R.L.

500177 Brasov - Romania  
 1y Griviței Blvd.  
 Tel.: +40-268-308700, fax: +40-268-308705  
 E-mail: office@elmas.ro

www.ascensoare.ro

Exclusive Partner



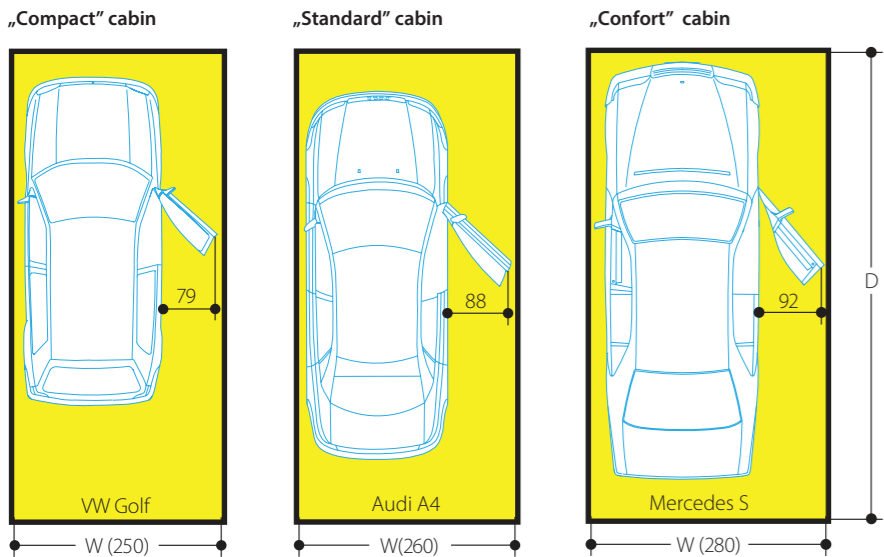
0413 100 07 9025

Carlifts provide an access from street level to parking areas without the need for ramps. Both the vehicle and driver are transported quickly and conveniently to parking levels either above or below the entrance level.

The product is manufactured in Romania according with EN 81-2 Directive.  
 Applications: office buildings, auto showrooms, public car parking, commercial spaces.



**■ Carlifts • Dimensions**

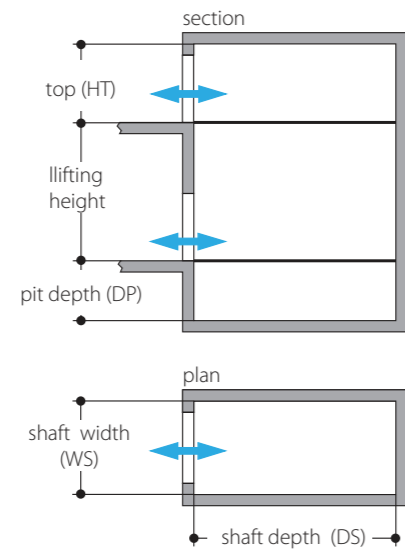


We offer three cabin sizes to suit various vehicle dimensions. A wide cabin is more convenient for entering and exiting and also should it be necessary to open the vehicle door when in the lift, for example in an emergency.

**■ Lift car with one door, with Jupiter 1:1 suspension**

Door opening width 240 cm for capacity 3850 and 4100 kg						Internal shaft dimensions (cm)					
Door opening width 250 cm for capacity 4500 kg						depth (DS)		width (WS)		height	
Door opening height 200 cm						door panels	door panels	top (HT)	pit (DP)		
Lifting height	Cabin dimensions D	W	H	Load capacity (kg)	No. of persons	4	6	4	6	top (HT)	pit (DP)
3.000	550	250	210	3.850	51	595	605	375	350	375	120
6.000	550	250	210	3.850	51	595	605	375	350	375	157
9.000	550	250	210	3.850	51	600	610	375	350	390	168
12.000	550	250	210	3.850	51	600	610	375	350	390	268
3.000	560	260	210	4.100	54	605	615	375	360	400	120
6.000	560	260	210	4.100	54	605	615	375	360	400	131
9.000	560	260	210	4.100	54	610	620	375	360	415	141
12.000	560	260	210	4.100	54	610	620	375	360	415	242
3.000	580	280	210	4.500	60	625	635	395	380	450	120
6.000	580	280	210	4.500	60	625	635	395	380	450	120
9.000	580	280	210	4.500	60	630	640	395	380	465	120
12.000	580	280	210	4.500	60	630	640	395	380	465	191

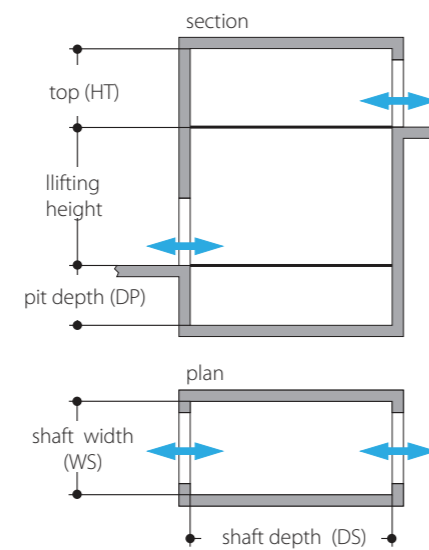
Other configurations and dimensions on request.



**■ Lift car with two doors (through loader), with Jupiter 1:1 suspension**

Door opening width 240 cm for capacity 3850 and 4100 kg						Internal shaft dimensions (cm)					
Door opening width 250 cm for capacity 4500 kg						depth (DS)		width (WS)		height	
Door opening height 200 cm						door panels	door panels	top (HT)	pit (DP)		
Lifting height	Cabin dimensions D	W	H	Load capacity (kg)	No. of persons	4	6	4	6	top (HT)	pit (DP)
3.000	550	250	210	3.850	51	615	633	375	350	375	120
6.000	550	250	210	3.850	51	615	633	375	350	375	157
9.000	550	250	210	3.850	51	615	633	375	350	390	168
12.000	550	250	210	3.850	51	615	633	375	350	390	268
3.000	560	260	210	4.100	54	625	643	375	360	400	120
6.000	560	260	210	4.100	54	625	643	375	360	400	131
9.000	560	260	210	4.100	54	625	643	375	360	415	141
12.000	560	260	210	4.100	54	625	643	375	360	415	242
3.000	580	280	210	4.500	60	645	663	395	380	450	120
6.000	580	280	210	4.500	60	645	663	395	380	450	120
9.000	580	280	210	4.500	60	645	663	395	380	465	120
12.000	580	280	210	4.500	60	645	663	395	380	465	191

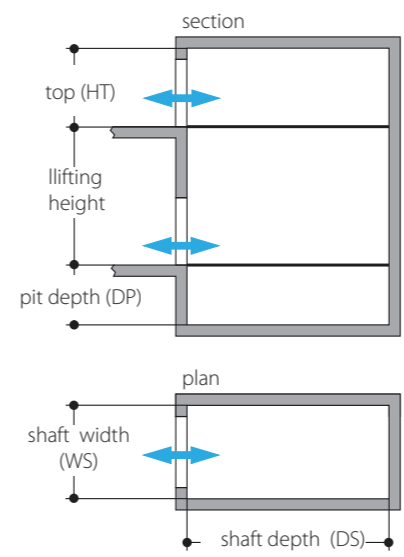
Other configurations and dimensions on request.



**■ Lift car with one door, with Jupiter 2:1 suspension**

Door opening width 240 cm for capacity 3850 and 4100 kg						Internal shaft dimensions (cm)					
Door opening width 250 cm for capacity 4500 kg						depth (DS)		width (WS)		height	
Door opening height 200 cm						door panels	door panels	top (HT)	pit (DP)		
Lifting height	Cabin dimensions D	W	H	Load capacity (kg)	No. of persons	4	6	4	6	top (HT)	pit (DP)
3.000	550	250	210	3.850	51	595	605	375	350	375	140
6.000	550	250	210	3.850	51	595	605	375	350	375	140
9.000	550	250	210	3.850	51	600	610	375	350	375	140
14.000	550	250	210	3.850	51	600	610	375	350	375	140
3.000	560	260	210	4.100	54	605	615	375	360	375	140
6.000	560	260	210	4.100	54	605	615	375	360	375	140
9.000	560	260	210	4.100	54	610	620	375	360	375	140
12.000	560	260	210	4.100	54	610	620	375	360	375	140
14.000	560	260	210	4.100	54	610	620	375	360	375	140
3.000	580	280	210	4.500	60	625	635	400	400	375	140
6.000	580	280	210	4.500	60	625	635	400	400	375	140
9.000	580	280	210	4.500	60	630	640	400	400	375	140
12.000	580	280	210	4.500	60	630	640	400	400	375	140
14.000	580	280	210	4.500	60	630	640	400	400	375	140

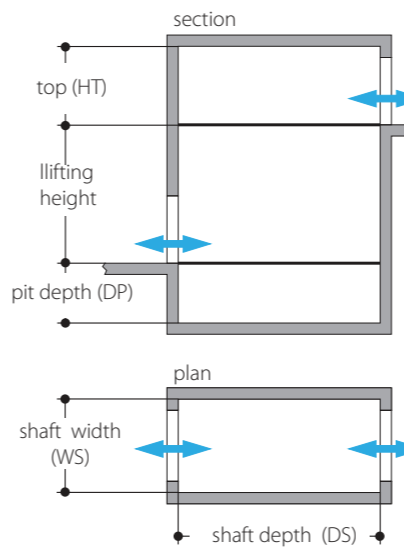
Other configurations and dimensions on request.



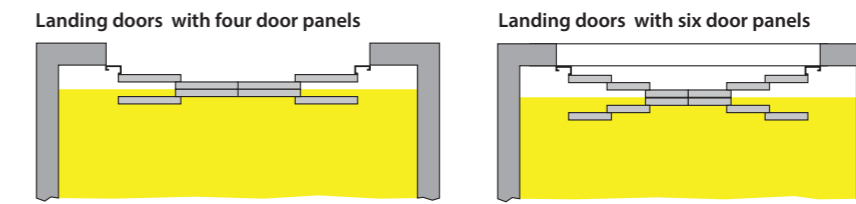
**■ Lift car with two doors (through loader), with Jupiter 2:1 suspension**

Door opening width 240 cm for capacity 3850 and 4100 kg						Internal shaft dimensions (cm)					
Door opening width 250 cm for capacity 4500 kg						depth (DS)		width (WS)		height	
Door opening height 200 cm						door panels	door panels	top (HT)	pit (DP)		
Lifting height	Cabin dimensions D	W	H	Load capacity (kg)	No. of persons	4	6	4	6	top (HT)	pit (DP)
3.000	550	250	210	3.850	51	615	633	375	350	375	140
6.000	550	250	210	3.850	51	615	633	375	350	375	140
9.000	550	250	210	3.850	51	615	633	375	350	375	140
12.000	550	250	210	3.850	51	615	633	375	350	375	140
14.000	550	250	210	3.850	51	615	633	375	350	375	140
3.000	560	260	210	4.100	54	625	643	375	360	375	140
6.000	560	260	210	4.100	54	625	643	375	360	375	140
9.000	560	260	210	4.100	54	625	643	375	360	375	140
12.000	560	260	210	4.100	54	625	643	375	360	375	140
14.000	560	260	210	4.100	54	625	643	375	360	375	140
3.000	580	280	210	4.500	60	645	663	400	400	375	140
6.000	580	280	210	4.500	60	645	663	400	400	375	140
9.000	580	280	210	4.500	60	645	663	400	400	375	140
12.000	580	280	210	4.500	60	645	663	400	400	375	140
14.000	580	280	210	4.500	60	645	663	400	400	375	140

Other configurations and dimensions on request.

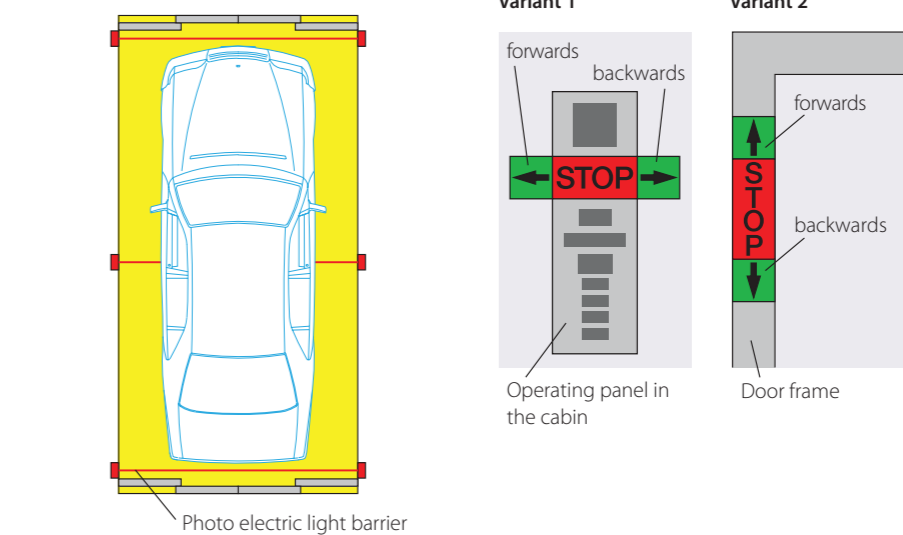


**■ Carlifts • Door Panels**



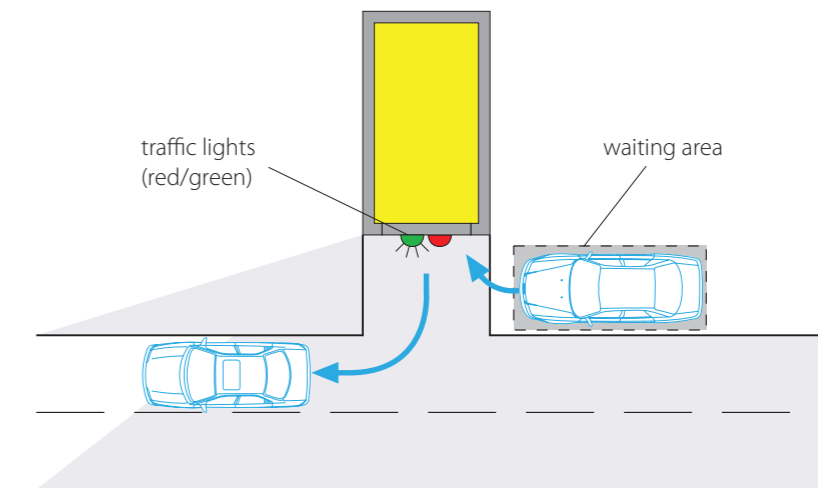
For doors with four panels the shaft will be slightly wider but not so long. Six panel doors will require the shaft to be a little narrower and longer.

**■ Vehicle positioning in the cabin**



The vehicle positioning system reassures the driver that his vehicle is correctly positioned to avoid contact with the closing doors. If one of the green buttons lights up when entering, the vehicle should be driven backwards or forwards as indicated by the arrow. When correctly positioned the green light goes out and the red "STOP" button lights up. The driver can now activate the lift and the doors close. Once the destination has been reached a green light indicates the direction of exit. The display panel can either be mounted in the main operating panel or in the door frame depending upon clearance between overall cabin width and door opening width.

**■ Traffic Light Control**



Traffic lights are part of standard equipment. Waiting areas and entries/exits to roads are an individual requirement and subject to relevant approval from Local Authorities.